



PROFESSIONAL DIPLOMA IN HEALTH AND SOCIAL CARE MANAGEMENT - OTHM

6 MONTHS | ONLINE
www.snatika.com





Table of **Contents**

WHAT IS SNATIKA?

01

MEET THE TEAM

02

**SNATIKA PROFESSIONAL DIPLOMA IN HEALTH
AND SOCIAL CARE MANAGEMENT - OTHM**

05

PROGRAM OVERVIEW

06

WHY CHOOSE SNATIKA?

09

ADMISSION PROCESS

10

INFORMATION

11

WHAT is SNATIKA?

Back in 2020, we saw many hard-working senior professionals stuck in the same position without any prospect for growth. The simple but overlooked reason for this glass ceiling was the lack of reputed academic qualifications on their CV. This lack haunted their career prospects during the pandemic and the subsequent economic disruption. It might be even more so in the future.

The situation was unfair because, due to their commitments and age, senior professionals were deprived of opportunities to pursue any reputed qualifications without hurting their career prospects, financial stability, or family commitments. The idea of enrolling for a Diploma/Certificate, moving away from their hometown, and quitting their jobs was impractical and scary.

Being in the education industry for years, we wanted to help them out of this rough spot. Above all, we wanted to create a online platform where they could pursue their Diplomas or Certificates without quitting their jobs, moving away from their families, or getting into debt without a source of income.

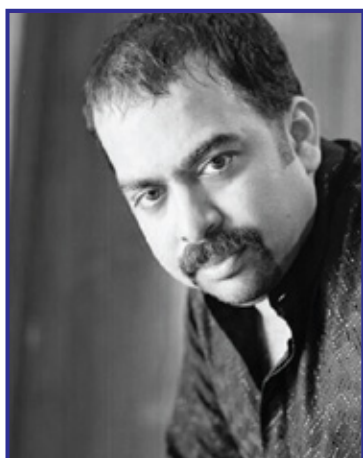
This is how SNATIKA was created in Mumbai, India. Our founders and the team had decades of experience in the education industry, which gave us a head start. We knew our adult learners needed nothing less than a reputed and globally recognised diploma to make it to the top. We partnered with reputed international education institutions to provide our learners with academic qualifications. SNATIKA has also been ISO certified for its Admission Process and Academic Delivery Process. We continue to provide one of the largest bouquet of programs exclusively for senior professionals across different domains.

Our mission is to serve senior working professionals with a fair opportunity to pursue career-enhancing professional programs on our state-of-the-art Learning Management System.

SNATIKA™
Boosting Careers of Professionals

Meet the TEAM

Get to know the team working behind the scenes to provide you with the highest-quality online education.



Sunil Janardhan
Founder Director

Sunil is a seasoned professional with 28 + years of rich experience in conceptualising and driving high-end strategic business models across diverse global economic hot-spots. Sunil has the privilege of travelling & doing business pan India & across 33 countries worldwide.

He has extensive hands-on experience and knowledge of Africa, Middle East, Asia & CIS markets. He has successfully managed different cultures, team members & partners across demographics/industries. He comes with expertise in International Business, Consulting, Sales & Marketing, Profit Centre Operations, Business Development, Key Account Management, Product Launches and Distributor/Channel Management.

He has also been part of various strategic tie ups & JV's. Sunil specialises in finding new markets for sales growth. He has worked across large, medium & start-up organisations. He has associated with organisations like Aptech Ltd, ITI EdVest, Kuoni Travels, Kohinoor Technical Institute & Trade Wings.

Sunil has done his Post Graduation in International Business. He is based out of India.



Premjit Biswas
Founding Member
(Director of Education)

Premjit is a senior professional with over two and a half decades of experience in the Education and Training domain. He brings in his immense experience of handling large operations across different geographies. Premjit also has considerable knowledge of entrepreneurship, innovation and skills development. He has experience in

developing and managing partners and business operations in multiple countries.

He has also managed global projects. He firmly believes that the success or failure of a program lies in the impact it has had on the lives of the beneficiaries. Hence, programs should be designed keeping this as a focal point. That way the beneficiaries not only help themselves but help others and in turn continually increase the impact radius.

In his 20 years of corporate life, Premjit has been associated with large organisations like Aptech, Autodesk and Wadhvani Foundation. He was the founding member of a non-profit organisation - Tikсна Mission Trust. At Tikсна he worked relentlessly at the grassroots level, building a diverse environment to work & thrive in and enabling entrepreneurs.

Premjit is based out of India and has done his majors in Hospitality Management.



Professor Raj Gill
Advisory Member

An influential, entrepreneurial COO and Pro-Vice-Chancellor, Professor Raj Gill has over 40

years' experience in Higher Education and has held senior posts in Higher Education in the UK and internationally. His experience of Transnational Education (TNE) includes international marketing and Higher Education development in Asia, Africa and the Middle East.

Professor Gill has published widely in learned journals and publications and has chaired numerous sessions and presented at international conferences and symposia.

Professor Gill is based out of the UK and has a degree in Manufacturing Engineering and a PhD in Computer Simulation for Manufacturing Processes.



Roger Chetty
Advisory Member

Roger is an entrepreneur and corporate strategist with more than 20 years' senior management experience across several industries including Motor, Construction, Manufacturing, Education and Management

Consulting. His career began in market research and customer services with Blue-chip brands such as BMW, DaimlerChrysler, Audi, Standard Bank, and the South African Chamber of Business.

He has served on various boards during his illustrious career and has also co-authored several university policies and procedure documents. Roger is known for forging relationships with governments, educational institutions, and corporations all across Africa and the Middle East. He has been associated with organisations like Sika South Africa, University of KwaZulu-Natal – South Africa and NCC Education - UK.

Roger currently lives in Cape Town, South Africa and has an MBA degree from the Management College of Southern Africa.



Thierry Cabou
Advisory Member

Thierry Cabou is an expert in finance and economics. He focuses on investment and business development activities across Europe, Africa and India. He is also a Founding Member, Lifetime member and Representative for Africa for the Africa India Economic Foundation

(AIEF). He is an advisor to the Bank of Asia and Asia Pacific Development Bank. He is a Knight of the Sovereign Order of St John of Jerusalem of Rhodes and Malta.

Thierry provides advisory and management services to government and large institutions. With Merrill Lynch, his group has arranged for several African governments' investment facilities up to 600 million US dollars after receiving mandates from these governments. He has secured with his partners a 400 million Euros plan for the oil and refinery sector in Senegal.

Mr Thierry Cabou is educated in Paris, France, where he got degrees in International Business Law from Pantheon Sorbonne University.

COUNT ON OUR QUALIFICATIONS



Learners are guided by SNATIKA at each level to choose the right program, and the final decision to provide admission rests with SNATIKA. SNATIKA's admission process ensures that only those learners who are apt for the program get admitted to our programs. Learners are provided with the right resource material, academic support, and timely assistance for them to successfully complete their program. We are able to provide this across genders, races, time zones, and geographies because of a strong academic delivery process, which is aptly supported by our PhD/ Doctorate facilitators. SNATIKA's academic delivery process ensures this is done flawlessly.

SNATIKA is certified for ISO 9001:2015 for "Admission Process & Academic Delivery Process."



Universidad Católica San Antonio de Murcia (UCAM) is a fully accredited European University founded in the year 1996. The university is strategically located in Murcia, Spain, with a Campus of more than 16,000 students and around 1,000 professors. The World University Ranking especially highlights the internationalisation capacity of UCAM. The university has a diverse academic offer, constantly adapting and consistent with the real needs of society. MBA degree is awarded by UCAM under the provision of university private degrees – Título Propio.

SNATIKA learners are awarded MBA degrees from UCAM.



OTHM, UK, is an awarding body which is approved and regulated by Ofqual – Office of the Qualification and Examinations Regulations, UK (a UK government department). Ofqual is responsible for maintaining standards and confidence in international qualifications. Ofqual also regulates the National Curriculum Assessments in England. OTHM aims to support professions and industry by providing excellent qualifications that contribute for a highly qualified and experienced workforce.

SNATIKA is an accredited/ approved training partner of OTHM.



London Graduate School, UK offers excellent university programmes designed for students to gain knowledge and skills for a fast-changing and complex world. LGS promotes learning and sharing of knowledge by offering a blend of teaching and learning methods that combine personal and professional development with world-class academic knowledge. We have partnered with LGS to provide UK university degrees.

SNATIKA learners are awarded MA, MSc, or MBA degrees from a UK University through LGS.



Buckingham University is the oldest of Britain's independent universities and the only one in the UK with a Royal Charter. The university is ranked in the Top 10 by The Complete University Guide 2023 for Student Satisfaction and by The Times and The Sunday Times Good University Guide 2022 for Teaching Quality. It has also been awarded the QAA Quality Mark for meeting or exceeding UK expectations for quality and standards.

This partnership with the university is through LGS.



QUALIFI, UK is recognised as an Awarding Organisation (AO) by Ofqual-Office of the Qualification and Examinations Regulations in the UK. QUALIFI must assure the regulators to continue the General Conditions of Recognition in England and that of the approved centres must meet the same exacting standards. And these qualifications combine UK standards with relevant international content, so learners can achieve their full potential in today's global economy.

SNATIKA is an accredited/ approved training partner of QUALIFI.



IDM has over four decades of experience in the higher education sector. Having closely worked with the industry and brought global education to local students, IDM has pioneered the way forward in getting international recognition for talented students. The organisation aims at exceeding the Quality & Standard expectation and has been awarded the ISO 9001:2015 certification.

SNATIKA learners are awarded a BSc (Hons), BA (Hons), MA, MSc, or MBA degree from the University of Gloucestershire through IDM.



The University of Gloucestershire, a UK state university, is the degree awarding institution. It is located in the edge of the stunning Cotswolds and has three campuses which are based in Cheltenham and Gloucester. The University is a diverse, vibrant community of 12,000 students and 1,500 staff. The University has scored 90/100 and are placed in the top tier of the new SOS-UK net zero ranking. Ranked 6th globally in the Postgraduate Research Experience Survey, 2019.

This partnership with the university is through IDM.

SNATIKA PROFESSIONAL DIPLOMA IN HEALTH AND SOCIAL CARE MANAGEMENT - OTHM

The objective of the Professional Diploma in Health and Social Care Management is to develop learners' understanding of policy, management theory and practice in health and social care. It provides learners with an opportunity to engage with the challenges facing professionals, services users and policy makers in their own country. It combines both theoretical and practical knowledge in the health and social care profession. Upon successful completion of the course the learner will be able to, develop managerial skills to manage quality in the health and social care sector, manage the budget and perform financial analysis to the health and social care organizations for effective decision making, manage critical issues in the organization to improve management practice, perform environmental analysis for strategic marketing decision making in order to implement the strategy, and also critically review the role of agencies and healthcare organizations in the promotion of health program globally.

Who is it meant for?

SNATIKA is a dedicated platform for senior professionals who have work experience. Hence, SNATIKA's Professional Diploma in Health & Social Care Management is suitable for

- Health Care Professionals (Clinical & Non-Clinical)
- Social Care Professionals
- Public Health Consultants and Policy Makers



Eligibility

Since our Professional Diploma are highly specialised for advanced learners, we believe you can only take full advantage of this education if you have relevant work experience.

Therefore, the eligibility criteria for SNATIKA's Professional Diploma is:

- ▶ A Levels/ Grade 12/ Any Equivalent Qualification and/or
- ▶ Minimum 2 years of Work Experience
- * Only a very small percentage of applicants are approved on the basis of Recognition of Prior Learning (RPL).

MODULES

UNITS COVERED

- Personal and Professional Development in Health and Social Care
- Managing Quality in Health and Social Care Settings
- Principles of Leadership and Management
- Health and Safety in Health and Social Care Settings
- Resource Management in Health and Social Care
- Research Methods for Healthcare Professionals

OVERVIEW

SNATIKA's Professional Diploma in Health & Social Care Management is delivered by SNATIKA through our own LMS. Our Subject Matter Experts have designed the pedagogy that will meet the demands and fulfil the needs of a busy working professional. Our PhD-level Masters Guides will help you through the program.

UNIT SPECIFICATIONS

Unit -1: PERSONAL AND PROFESSIONAL DEVELOPMENT IN HEALTH AND SOCIAL CARE

Unit Aims

The aim of this unit is to introduce learners to the principles of reflective practice and personal and professional development in relation to their role as a health and social care manager. The unit also enables learners to apply these principles to develop their career as health and social care managers.

LEARNING OUTCOMES

- ▶ Be able to plan for their progression as a health and social care manager.
- ▶ Be able to reflect on practice.
- ▶ Be able to develop own skills and understanding in relation to working with others in health and social care practice.



Unit -2: MANAGING QUALITY IN HEALTH AND SOCIAL CARE SETTINGS

Unit Aims

The aim of this unit is to develop learners' understanding of different perspectives of quality in relation to health and social care service provision. The unit also addresses how this is evaluated in order to improve services and empower and involve service users.



LEARNING OUTCOMES

- ▶ Understand perspectives of quality in health and social care services.
- ▶ Understand strategies for achieving quality in health and social care services.
- ▶ Understand the efficacy of systems, policies and procedures in health and social care services.
- ▶ Understand methods used to evaluate quality of service provision in health and social care.

Unit -3: PRINCIPLES OF LEADERSHIP AND MANAGEMENT

Unit Aims

The aim of this unit is to develop learner's leadership and management knowledge and skills, underpinning their practice as effective health care professionals. The unit introduces the management of teams and approaches to dealing with complex situations, providing quality service outcomes through effective practice and policy implementation.

LEARNING OUTCOMES

- ▶ Understand theories of leadership and management relevant to the health and social care sector.
- ▶ Understand the challenges that impact employee performance in the health and social care sector.
- ▶ Understand the development and effectiveness of teams in the health and social care sector.



Unit -4: HEALTH AND SAFETY IN HEALTH AND SOCIAL CARE SETTINGS

Unit Aims

The aim of this unit is to develop learners' understanding of management responsibilities for ensuring the health and safety of the health and social care workplace and the people within it.

LEARNING OUTCOMES

- ▶ Understand how health and safety legislation is implemented in health and social care settings.
- ▶ Understand the role of risk assessment in health and social care service provision.
- ▶ Understand the monitoring and review of health and safety in health and social care settings.



Unit -5: RESOURCE MANAGEMENT IN HEALTH AND SOCIAL CARE

Unit Aims

The aim of this unit is to develop learners' understanding of the processes involved in the management of human and financial resources. The unit explores recruitment, and the management and development of people in the health and social care workplace. Key financial concepts and tools used by managers in health and social care organizations are also looked at.

LEARNING OUTCOMES

- ▶ Understand factors involved in human resource planning in health and social care organizations.
- ▶ Understand recruitment and retention aspects in health and social care.
- ▶ Understand the value of financial awareness in managing health and social care organizations.
- ▶ Understand the different sources of finance available for the health and social care organizations.



Unit -6: RESEARCH METHODS FOR HEALTHCARE PROFESSIONALS

Unit Aims

The aim of this unit is to develop learners' research skills, to include understanding different research approaches, formulation of research proposals, planning research activity, analyzing and interpreting data, and the relationship between research and evidence-based practice.



LEARNING OUTCOMES

- ▶ Understand the relevance of research within health and social care contexts.
- ▶ Understand research approaches in health care contexts.
- ▶ Be able to plan a research proposal relevant to management of health and social care contexts
- ▶ Be able to analyses and interpret a range of data.
- ▶ Understand the relationship between research and evidence-based practice.

WHY CHOOSE SNATIKA?

SNATIKA's Professional diploma offer the best value for the investment that a learner makes in her/his education. The same is accomplished that by being awarded with an authentic qualification from an UK educational body, along with a certificate from SNATIKA. Upon successful completion of the professional program; SNATIKA offers:

- Level 6 Diploma from OTHM, UK
- Professional Program Certificate from SNATIKA

Accreditation ensures that quality and regulatory standards are met.

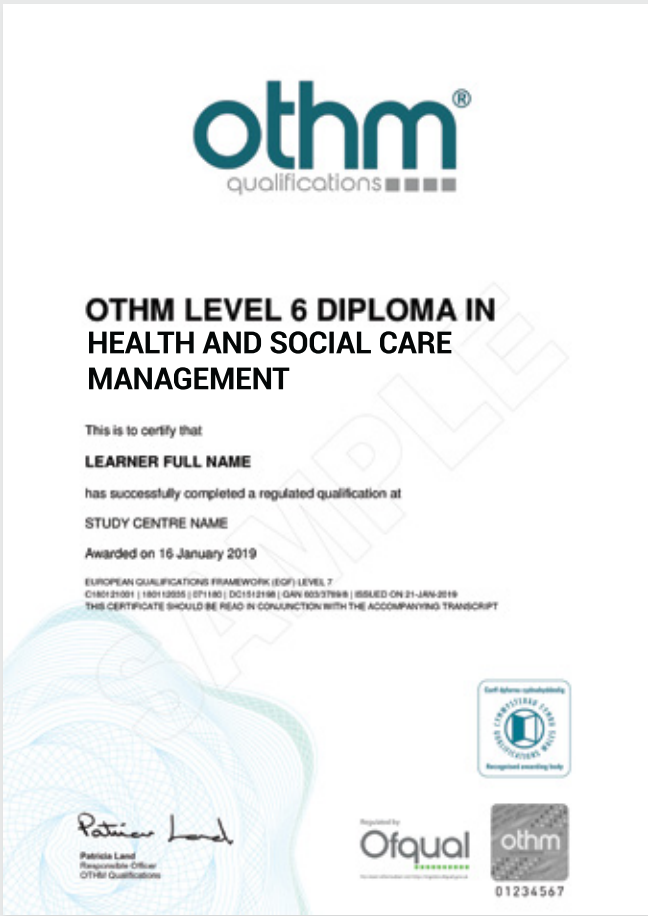
SNATIKA is an approved learning centre of OTHM, UK. OTHM is an awarding organisation in the UK, which is regulated by the OFQUAL (Office of Qualifications and Examinations Regulation) and Qualifications Wales.

Since Ofqual also regulates the National Curriculum Assessments in England, SNATIKA students get to study the same course units as their peers taking the same qualification in the UK.

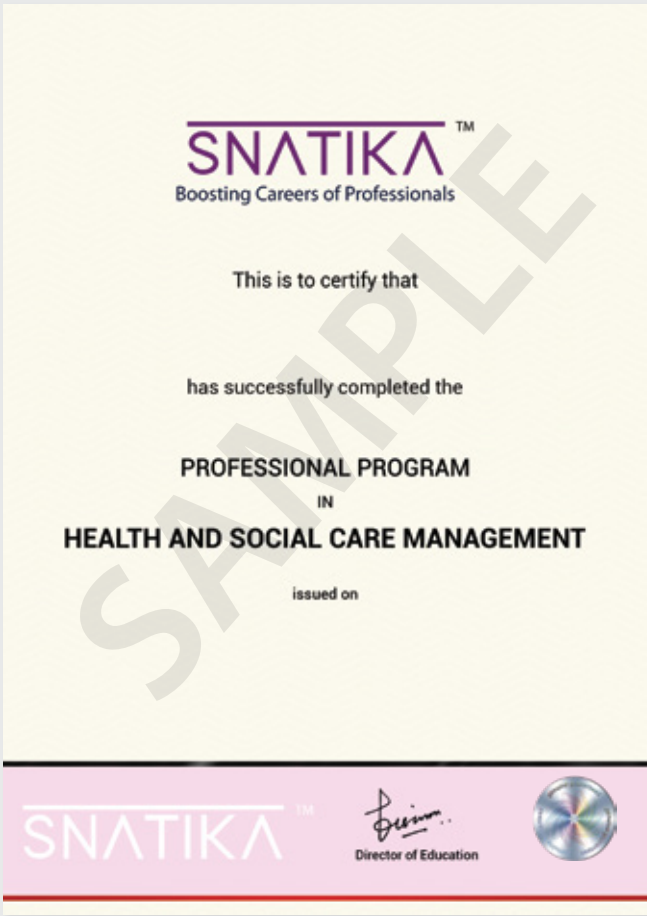


What You Will Earn

You will receive the following certificates after the successful completion of the program:



Level 6 Diploma
OTHM, UK



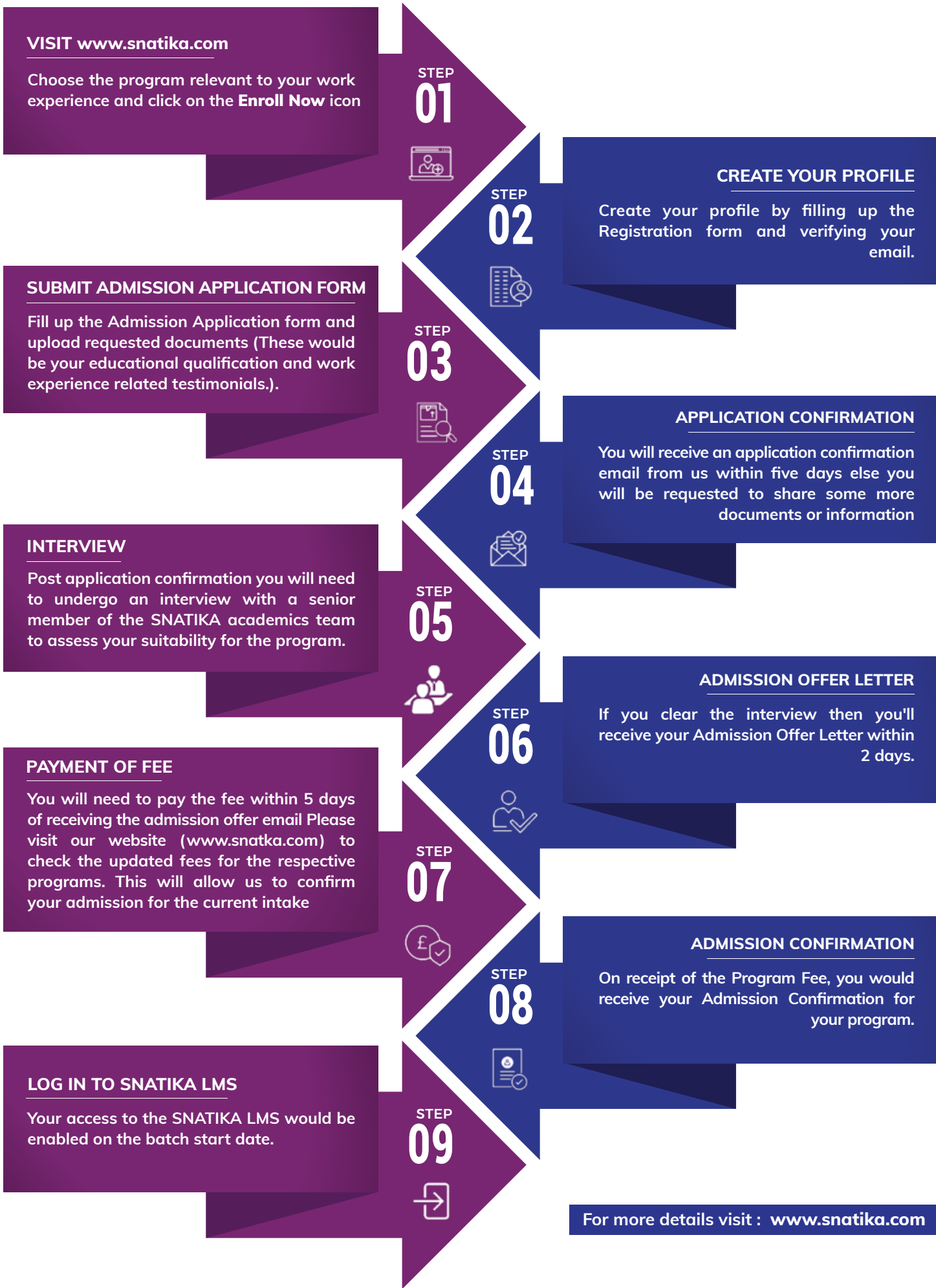
Professional Program Certificate
SNATIKA

Disclaimer: The above images are for reference purposes only.

Admission Process

SNATIKA has limited seats for each program. Therefore we follow a first-come, first-served process of admission and applications are evaluated as soon as they are received. The earlier you apply, the better your chances are for securing your admission to our Professional Diploma given that all the documents and requirements are satisfied.

The step-by-step admission process is outlined below.



INFORMATION



State of the art LMS

The program delivery happens through the robust and user friendly SNATIKA LMS (Learning Management System). It is accessible 24x7 from anywhere in the world.

The SNATIKA pedagogy

Our Professional Diploma programs have been designed by SNATIKA's Subject Matter Experts who have decades of experience in the education industry. The pedagogy is smartly designed to fit the program content into the busy schedules of senior working professionals. You will need just 2 - 3 hours of daily input to succeed in the program.

The immersive nature of the syllabus, coupled with the learner's experience, makes the program easier to comprehend and complete in just 6 months. The assignment based assessment makes the learner grasp the concepts from the roots and enhances the research, critical thinking, and writing skills thereby.



PhD Level Guides

SNATIKA learners will be supported by our PhD level Guides upon the batch start date. SNATIKA's PhD level SMEs will help you with all the challenges you face academically throughout the program.

Session Dates

Aspiring candidates may join in any one of our yearly sessions.

You can check the website (www.snatika.com) for current information for the closing date of admissions and the batch start date.



Selection Process

Selection is based on the details provided during the application process. Admission is granted on a first-come-first-served basis

INFORMATION

Program Format- Online

The entire duration of the Professional program is delivered through state-of-the-art SNATIKA Learning Management System.



Duration of the Program

The duration of the program is 6 months.

This duration only changes in case you fail to meet the requirements of the assignment and the deadline passes.

The time commitment required for SNATIKA's Professional diploma is minimal since the programs are formulated for working professionals. You merely need to commit 8-10 hours a week to your studies.

Program Fees

Please visit our website (www.snatika.com) to check the updated fees for the respective programs.

All learners are required to deposit the fee in full within 5 days of receiving the admission offer letter email.


To ease the financial burden on your shoulders, we offer an Instalment option for depositing the program fee.



SNATIKA™
Boosting Careers of Professionals


For further details

web: www.snatika.com | email: info@snatika.com



INDIA

+91 8047183355




NIGERIA

+234 1 8880209



SOUTH AFRICA

+27 21 8259877



REST OF THE WORLD

+ 44 20 3287 6900